

# COMMUNITY SNAPSHOT SURVEY 2026

*Dataset collected among community leaders, nonprofit organizations, service providers, schools, and government agencies in Southern Indiana.*

*January-February 2026*



# Being for Others

HEALTH & WELLNESS FOUNDATION

[www.BeingforOthers.org](http://www.BeingforOthers.org)

2704 N. Newton Street

Jasper IN, 47546

(812) 556-0400

[info@beingforothers.org](mailto:info@beingforothers.org)

## INTRODUCTION

Being for Others Health and Wellness Foundation (BFO) hosted eight events during the months of January and February 2026, across the BFO Southern Indiana service region to discuss various grant offerings, and to present our newest opportunity: the Community Collaboration grant program.

The eight counties included in BFO's service region: Crawford, Daviess, Dubois, Martin, Orange, Perry, Pike, and Spencer.

Optional surveys were presented to approximately 190 participants over the course of a three-week period, with a total of 146 respondents submitting completed surveys. The participation group included local community leaders, representatives of nonprofit organizations, service providers, schools, and government agencies.

## REGIONAL PRIORITIES

Across the eight-county region, survey responses reveal strong alignment around a core set of challenges affecting families and communities:

### **1. Mental Health and Substance Use Support (Top Regional Challenge)**

- a. This is the most frequently cited challenge across the region.
- b. Stakeholders consistently expressed:
  - Need for expanded treatment options
  - Workforce shortages in behavioral health
  - Gaps in inpatient and crisis services
  - Increased youth mental health concerns
- c. Mental health is not viewed as an isolated challenge — it intersects with housing, workforce, transportation, and early childhood outcomes.

### **2. Housing and Economic Stability**

- a. A strong second-tier regional priority.
- b. Concerns include:
  - Affordable housing shortages
  - Workforce participation barriers
  - Cost-of-living pressures
  - Limited rental stock in rural communities
- c. Housing instability is frequently linked to workforce shortages and family stressors.

### **3. Transportation and Connectivity**

- a. Especially acute in smaller population counties.
- b. Transportation barriers affect:
  - Access to healthcare
  - Employment
  - Childcare
  - Mental health appointments
  - Senior services
- c. Transportation is a systems-level constraint limiting progress across sectors.

### **4. Early Childhood and Family Support**

- a. Emerging as a strong regional priority.
- b. Themes include:
  - Childcare access
  - Early learning supports
  - Family resource coordination
  - Preventative upstream investments
- c. Counties with larger survey response pools (Dubois, Spencer, Orange) emphasized this heavily.

## REGIONAL BARRIERS TO OVERCOME

### 1. Limited Funding (Top Regional Barrier)

- a. Funding instability is the most consistent limiting factor region-wide.
- b. Concerns include:
  - Grant dependence
  - Unsustainable funding cycles
  - Inability to scale programs
  - Administrative burden of funding requirements

### 2. Capacity and Staffing Challenges

- a. Workforce shortages are especially acute in:
  - Behavioral health
  - Nonprofits
  - Early childhood services
- b. Smaller population counties (Martin, Pike) emphasize staffing even more strongly.

### 3. Lack of Coordination Between Organizations

- a. Particularly noted in mid-to-larger population counties:
  - Service duplication
  - Communication gaps
  - Referral inefficiencies
  - Data sharing limitations
- b. There is strong interest in deeper cross-sector alignment.

### 4. Community Trust and Engagement

- a. Raised in several counties, especially Perry, Spencer, and Pike.
- b. Themes include:
  - Stigma around mental health
  - Low engagement in available services
  - Need for relationship-building

## COUNTY PRIORITIES

Dubois County respondents expressed the strongest concern around mental health needs, while Martin County respondents emphasized housing and economic stability. Crawford County participants highlighted transportation as a dominant challenge, and Pike County respondents reported economic stability and transportation slightly outweighing mental health concerns. Other counties including Daviess, Perry, Orange, and Spencer reflected on similar combinations of mental health, housing, and transportation concerns, with varying barriers related to staffing, coordination, and community engagement.

## OPPORTUNITIES FOR ACTION

Based on survey feedback, several strategic opportunities for regional collaboration have been suggested, including:

- Expanding regional mental health solutions rather than county-by-county approaches
- Increasing investment in early childhood programs as a prevention strategy
- Addressing transportation as a cross-cutting issue affecting multiple sectors
- Developing sustainable funding models that encourage cross-county partnerships
- Building stronger coordination infrastructure, including shared convening, referral pathways, and aligned data systems

## CONCLUSION

With this first-time report, BFO plans to integrate insights from the Community Snapshot Survey into future grantmaking, partnerships, and regional strategies aimed at improving health outcomes across its eight-county service area.

By sharing these findings, and future reports, with the broader Southern Indiana community, BFO hopes to inspire deeper collaboration among organizations to strengthen and advance health and wellness initiatives throughout the region.

## MOST FREQUENTLY RECOGNIZED ORGANIZATIONS

Respondents were asked to list entities doing exceptional work in the health and wellness space.

- Seven mentions
  - [Martin County Alliance](#)
- Four mentions
  - [Safe Haven REC](#)
- Three mentions
  - [Dove House](#)
  - [Trotter House](#)
  - [City of Loogootee](#)
  - [Martin County Community Foundation](#)
  - [Team OC](#)
- Two mentions
  - [Habitat for Humanity of Dubois County](#)
  - [Trinity United Church of Christ](#)
  - [Traditional Arts Today](#)
  - [Dubois County Community Foundation](#)
  - [ALASI](#)
  - [Loogootee Beautification Board](#)
  - [Martin County Historical Society](#)
  - [Youth First](#)
  - [RISE Peer Recovery](#)
  - [CEDA](#)
  - [Cannelton Food Pantry](#)
  - [Southern Indiana Community Health Care](#)

## CROSS-COUNTY DATA TRENDS

MOST COMMON TOP CHALLENGES ACROSS COUNTIES	MOST COMMON BARRIERS ACROSS COUNTIES
<p><b>Mental Health &amp; Substance Use Support</b> Most frequently cited issue in the majority of counties.</p>	<p><b>Limited Funding</b> Overwhelmingly the top barrier in almost every single county.</p>
<p><b>Housing &amp; Economic Stability</b> Consistently ranked near the top for most counties.</p>	<p><b>Capacity / Staffing Challenges</b> Very common in Dubois, Martin, Pike, Spencer, and Daviess.</p>
<p><b>Transportation &amp; Connectivity</b> A strong recurring theme, particularly in Crawford, Perry, and Pike.</p>	<p><b>Lack of Coordination Between Organizations</b> Appears frequently in Dubois, Daviess, Orange, Spencer, and Crawford.</p>
<p><b>Early Childhood &amp; Family Support</b> Prominent in Dubois, Spencer, Orange, and Perry.</p>	<p><b>Community Trust / Engagement</b> Noted particularly in Perry and Pike.</p>

## CROSS-COUNTY DATA TRENDS

TOTAL	COUNTY	TOP ISSUES	BARRIERS	SUMMARY
9	Crawford	<ol style="list-style-type: none"> <li><b>Transportation &amp; Connectivity</b></li> <li>Housing &amp; Economic Stability</li> <li>Mental Health &amp; Substance Use Support</li> <li>Early Childhood &amp; Family Support</li> </ol>	<ol style="list-style-type: none"> <li><b>Limited Funding</b></li> <li>Coordination Gaps</li> </ol>	Crawford respondents strongly emphasize transportation as a central need. Funding constraints are the main obstacle, but coordination and shared data also limit impact.
47	Dubois	<ol style="list-style-type: none"> <li><b>Mental Health &amp; Substance Use Support</b></li> <li>Early Childhood &amp; Family Support</li> <li>Transportation &amp; Connectivity</li> <li>Housing &amp; Economic Stability</li> </ol>	<ol style="list-style-type: none"> <li><b>Limited Funding</b></li> <li>Staffing Shortages</li> <li>Coordination challenges</li> </ol>	Dubois shows the clearest and strongest concern around mental health. Workforce capacity and funding pressures appear to strain systems despite strong engagement.
10	Martin	<ol style="list-style-type: none"> <li><b>Housing &amp; Economic Stability</b></li> <li>Community Safety &amp; Violence Prevention</li> <li>Transportation &amp; Connectivity</li> <li>Early Childhood &amp; Family Support</li> </ol>	<ol style="list-style-type: none"> <li><b>Capacity/Staffing Challenges</b></li> <li>Limited Funding</li> </ol>	Unlike many other counties, housing and economic stability outweigh mental health as the top concern. Staffing capacity is a more pressing barrier than coordination here.
18	Daviess	<ol style="list-style-type: none"> <li><b>Mental Health &amp; Substance Use Support</b></li> <li>Housing &amp; Economic Stability</li> <li>Transportation &amp; Connectivity</li> <li>Healthy Living &amp; Chronic Disease Prevention</li> </ol>	<ol style="list-style-type: none"> <li><b>Limited Funding</b></li> <li>Coordination Gaps</li> <li>Policy/System Barriers</li> <li>Staffing Challenges</li> </ol>	Mental health leads, but respondents highlight structural barriers (policy/system constraints) more than in some other counties.

8	Pike	<ol style="list-style-type: none"> <li>1. <b>Housing &amp; Economic Stability</b></li> <li>2. Transportation &amp; Connectivity</li> <li>3. Mental Health &amp; Substance Use Support</li> <li>4. Community Safety &amp; Violence Prevention</li> </ol>	<ol style="list-style-type: none"> <li>1. <b>Limited Funding</b></li> <li>2. Staffing Capacity</li> <li>3. Community Engagement</li> </ol>	Economic stability and transportation slightly outweigh mental health here. Workforce capacity is a recurring challenge.
16	Perry	<ol style="list-style-type: none"> <li>1. <b>Mental Health &amp; Substance Use Support</b></li> <li>2. Transportation &amp; Connectivity</li> <li>3. Early Childhood &amp; Family Support</li> <li>4. Housing &amp; Economic Stability</li> </ol>	<ol style="list-style-type: none"> <li>1. <b>Limited Funding</b></li> <li>2. Community Trust/Engagement</li> </ol>	Transportation and mental health are closely intertwined themes. There are also comments indicating the need for inpatient mental health resources.
18	Orange	<ol style="list-style-type: none"> <li>1. <b>Mental Health &amp; Substance Use Support</b></li> <li>2. Housing &amp; Economic Stability</li> <li>3. Early Childhood &amp; Family Support</li> <li>4. Transportation &amp; Connectivity</li> </ol>	<ol style="list-style-type: none"> <li>1. <b>Limited Funding</b></li> <li>2. Coordination challenges</li> <li>3. Policy barriers</li> </ol>	Mental health and housing dominate. Funding is cited even more heavily than other counties proportionally.
20	Spencer	<ol style="list-style-type: none"> <li>1. <b>Mental Health &amp; Substance Use Support</b></li> <li>2. Early Childhood &amp; Family Support</li> <li>3. Transportation &amp; Connectivity</li> <li>4. Housing &amp; Economic Stability</li> </ol>	<ol style="list-style-type: none"> <li>1. <b>Limited Funding</b></li> <li>2. Coordination Gaps</li> <li>3. Staffing Shortages</li> </ol>	Spencer mirrors Dubois in issue priorities but shows slightly more emphasis on collaboration and coordination barriers.



Sample of: Community Snapshot Survey 2026

**1. From your perspective, what are the top TWO challenges most impacting health and well-being in your county right now? (Select up to 2)**

- Access to comprehensive healthcare
- Mental health and substance use support
- Healthy living and chronic disease prevention
- Transportation and connectivity
- Early childhood and family support
- Housing and economic stability
- Social and civic engagement
- Community safety and violence prevention
- Other: \_\_\_\_\_

**2. What services or resources are currently in place addressing the challenges most impacting health and well-being in your county?**

---

---

---

**3. What is the biggest barrier to making progress on these issues in your county? (Select one)**

- Limited funding
- Lack of coordination between organizations
- Capacity/staffing challenges
- Data or shared understanding
- Community trust or engagement
- Policy or system barriers
- Others: \_\_\_\_\_

**4. Who is doing exceptional work in this space that BFO should know about? (Organizations or individuals)**

Name(s), role, and organization: \_\_\_\_\_

---

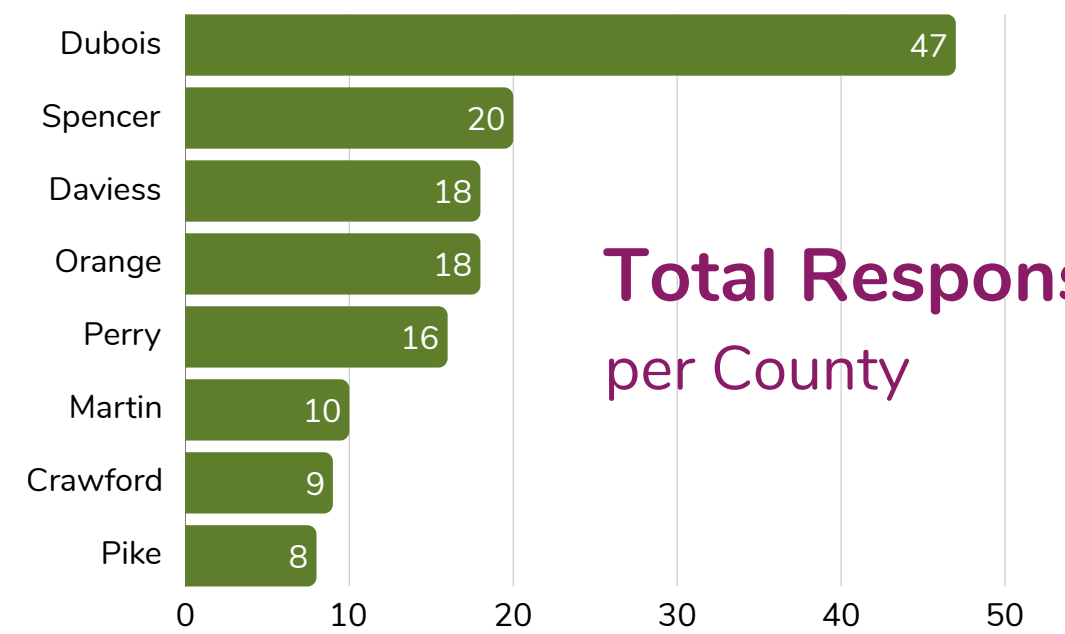
# COMMUNITY SNAPSHOT SURVEY

## 8 Counties | 146 Total Responses

Being for Others Health and Wellness Foundation hosted eight unique community gatherings to promote new and existing grant programs, and survey community leaders on top issues and barriers currently facing their communities.

### Top Issues:

1. Mental Health & Substance Use Support
2. Housing & Economic Stability
3. Transportation & Connectivity
4. Early Childhood & Family Support



Total Responses  
per County

Across the eight-county region, survey responses reveal strong alignment around a core set of challenges affecting families and communities.

While each county has unique nuances, several themes clearly rise to the regional level.



### Most Common Barriers:

1. Limited Funding
2. Capacity / Staffing Challenges
3. Lack of Coordination Between Organizations
4. Community Trust / Engagement

### Key Regional Observations:

#### 1. Mental Health is the Dominant Regional Issue

- a. Five out of the eight surveyed counties have determined this to be the #1 concern they face.

#### 2. Funding is the Universal Constraint

- a. Overwhelmingly the top barrier in almost every single county.

#### 3. Transportation is a Structural Challenge

- a. In regards to greater healthcare access, employment, and early childhood services.

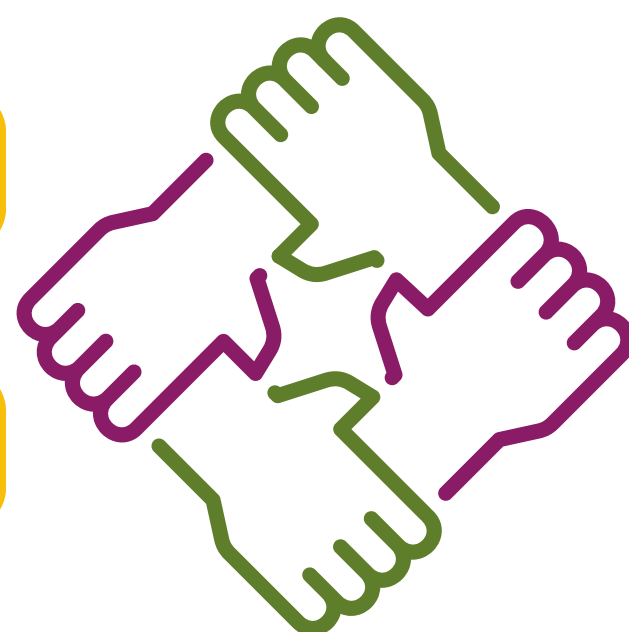
#### 4. Capacity and Coordination are System-Level Gaps

- a. Dubois, Daviess, Spencer, Orange, Crawford show stronger concern about organizational coordination.
- b. Dubois, Daviess, Martin, Pike emphasize staffing capacity.

### Regional Strategy:

Expanding regional mental health solutions rather than county-by-county approaches.

Developing sustainable funding models that encourage cross-county partnerships.



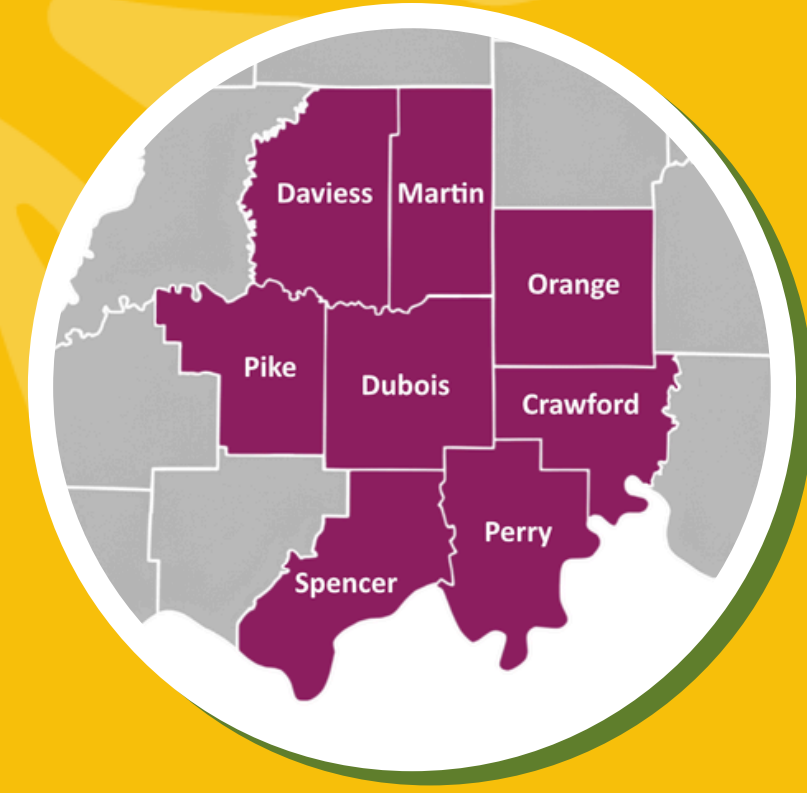
Increasing investment in early childhood programs as a prevention strategy.

Addressing transportation as a cross-cutting issue affecting multiple sectors.

Building stronger coordination infrastructure, including shared convening, referral pathways, and aligned data systems.

# COUNTY SUMMARY

8 Counties  
146 Total Responses



## Crawford County (9 Responses)

### Top Issues:

- Transportation & Connectivity
- Housing & Economic Stability
- Mental Health & Substance Use Support
- Early Childhood & Family Support

### Top Barriers:

- Limited Funding
- Coordination Gaps

Crawford respondents strongly emphasize transportation as a central need. Funding constraints are the main obstacle, but coordination and shared data also limit impact.

## Dubois County (47 Responses)

### Top Issues:

- Mental Health & Substance Use Support
- Early Childhood & Family Support
- Transportation & Connectivity
- Housing & Economic Stability

### Top Barriers:

- Limited Funding
- Staffing Shortages
- Coordination Challenges

Dubois shows the clearest and strongest concern around mental health. Workforce capacity and funding pressures appear to strain systems despite strong engagement.

## Martin County (10 Responses)

### Top Issues:

- Housing & Economic Stability
- Community Safety & Violence Prevention
- Transportation & Connectivity
- Early Childhood & Family Support

### Top Barriers:

- Capacity/Staffing Challenges
- Limited Funding

Unlike many other counties, housing and economic stability outweigh mental health as the top concern. Staffing capacity is a more pressing barrier than coordination here.

## Daviess County (18 Responses)

### Top Issues:

- Mental Health & Substance Use Support
- Housing & Economic Stability
- Transportation & Connectivity
- Healthy Living & Chronic Disease Prevention

### Top Barriers:

- Limited Funding
- Coordination Gaps
- Policy/System Barriers
- Staffing Challenges

Mental health leads, but respondents highlight structural barriers (policy/system constraints) more than in some other counties.

## Pike County (8 Responses)

### Top Issues:

- Housing & Economic Stability
- Transportation & Connectivity
- Mental Health & Substance Use Support
- Community Safety & Violence Prevention

### Top Barriers:

- Limited Funding
- Staffing Capacity
- Community Engagement

Economic stability and transportation slightly outweigh mental health here. Workforce capacity is a recurring challenge.

## Perry County (16 Responses)

### Top Issues:

- Mental Health & Substance Use Support
- Transportation & Connectivity
- Early Childhood & Family Support
- Housing & Economic Stability

### Top Barriers:

- Limited Funding
- Community Trust/Engagement

Transportation and mental health are closely intertwined themes. There are also comments indicating the need for inpatient mental health resources.

## Orange County (18 Responses)

### Top Issues:

- Mental Health & Substance Use Support
- Housing & Economic Stability
- Early Childhood & Family Support
- Transportation & Connectivity

### Top Barriers:

- Limited Funding
- Coordination Challenges
- Policy Barriers

Mental health and housing dominate. Funding is cited even more heavily than other counties proportionally.

## Spencer County (20 Responses)

### Top Issues:

- Mental Health & Substance Use Support
- Early Childhood & Family Support
- Transportation & Connectivity
- Housing & Economic Stability

### Top Barriers:

- Limited Funding
- Coordination Gaps
- Staffing Shortages

Spencer mirrors Dubois in issue priorities but shows slightly more emphasis on collaboration and coordination barriers.